

# Player Statistics



Round of 16

Paraguay - Japan 0:0 a.e.t. 5:3 PSO

Tshwane/Pretoria / Loftus Versfeld Stadium / RSA



**Japan**  
**2 Yuki ABE**  
Midfield

	1st half	2nd half	Extra time	Total	Team total	Team avg
Goal(s) scored	0	0	0	0	0	
Attempts on/off target	0	0	0	0	11	
Assist(s)	0	0	0	0	0	
Offside(s)	0	0	0	0	1	
Save(s)	0	0	0	0	6	
Yellow card(s)	0	0	0	0	4	
Red card	0	0	0	0	0	
Foul(s) committed	1	0	0	1	29	
Delivery/solo runs into the attacking third	0	1	0	1	32	2.9
Delivery/solo runs into the penalty area	0	0	0	0	11	1.0
Tackles gaining the ball	0	0	0	0	3	0.3
Tackles not gaining the ball	0	0	0	0	1	0.1
Tackles suffered losing the ball	0	0	0	0	2	0.2
Tackles suffered not losing the ball	0	0	0	0	3	0.3
Clearances Completed	0	0	0	0	0	0.0
Clearances Attempted	0	1	0	1	14	1.4

Passing distribution



Direction of play →

Received passing distribution

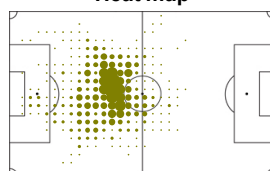


Direction of play →

## Activities

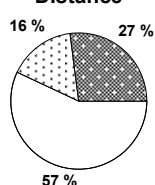
	1st half	2nd half	Extra time	Total	Team total	Team avg
Total time played (mins)	46'02"	35'35"	0'00"	81'37"		
Low activity time spent (%)	80%	81%	0%	80%	84%	
Medium activity time spent (%)	9%	9%	0%	9%	7%	
High activity time spent (%)	11%	10%	0%	11%	9%	
Distance covered (metres)	5,155	3,901	-	9,056	133,069	12,097
Low activity distance covered (metres)	3,000	2,147	-	5,147	80,649	7,331
Medium activity distance covered (metres)	879	601	-	1,480	18,907	1,719
High activity distance covered (metres)	1,276	1,153	-	2,429	33,515	3,047
Top speed (km/h)	19.27	21.13	-	21.13	29.43	23.48
Sprints	48	48	-	96	1357	157

Heat map



Direction of play →

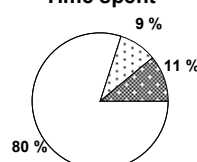
Distance



Activity



Time spent



FIFA does not vouch for the accuracy of technical statistics compiled in association with its competition results system partner.

TUE 29 JUN 2010; 18:51 CET / 18:51 local time - Version 1

Page1/0

2010 FIFA World Cup South Africa™

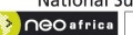
FIFA Partners



FIFA World Cup Sponsors



National Supporters



# Player Statistics



Round of 16

Paraguay - Japan 0:0 a.e.t. 5:3 PSO

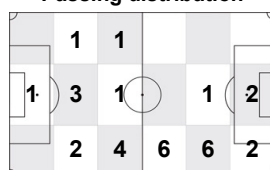
Tshwane/Pretoria / Loftus Versfeld Stadium / RSA



**Japan**  
**3 Yuichi KOMANO**  
 Defender

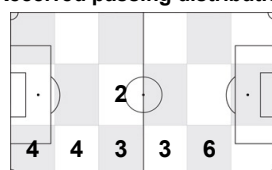
	1st half	2nd half	Extra time	Total	Team total	Team avg
Goal(s) scored	0	0	0	0	0	
Attempts on/off target	1	1	0	2	11	
Assist(s)	0	0	0	0	0	
Offside(s)	0	0	0	0	1	
Save(s)	0	0	0	0	6	
Yellow card(s)	0	0	0	0	4	
Red card	0	0	0	0	0	
Foul(s) committed	0	0	0	0	29	
Delivery/solo runs into the attacking third	2	3	1	6	32	2.9
Delivery/solo runs into the penalty area	0	2	0	2	11	1.0
Tackles gaining the ball	1	1	0	2	3	0.3
Tackles not gaining the ball	1	0	0	1	1	0.1
Tackles suffered losing the ball	1	0	0	1	2	0.2
Tackles suffered not losing the ball	0	0	0	0	3	0.3
Clearances Completed	0	0	0	0	0	0.0
Clearances Attempted	3	1	0	4	14	1.4

Passing distribution



Direction of play →

Received passing distribution

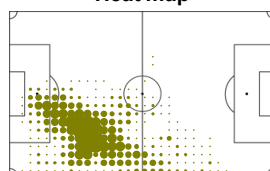


Direction of play →

## Activities

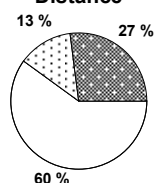
	1st half	2nd half	Extra time	Total	Team total	Team avg
Total time played (mins)	46'02"	48'18"	30'07"	124'27"		
Low activity time spent (%)	84%	83%	87%	85%	84%	
Medium activity time spent (%)	6%	7%	5%	6%	7%	
High activity time spent (%)	10%	10%	8%	9%	9%	
Distance covered (metres)	4,540	4,631	2,743	11,914	133,069	12,097
Low activity distance covered (metres)	2,762	2,724	1,625	7,111	80,649	7,331
Medium activity distance covered (metres)	532	618	341	1,491	18,907	1,719
High activity distance covered (metres)	1,246	1,289	777	3,312	33,515	3,047
Top speed (km/h)	19.35	23.55	21.38	23.55	29.43	23.48
Sprints	57	54	33	144	1357	157

Heat map

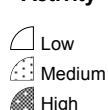


Direction of play →

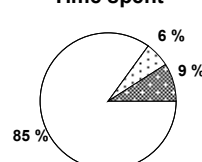
Distance



Activity



Time spent



FIFA does not vouch for the accuracy of technical statistics compiled in association with its competition results system partner.

TUE 29 JUN 2010; 18:51 CET / 18:51 local time - Version 1

Page1/0

2010 FIFA World Cup South Africa™

FIFA Partners



FIFA World Cup Sponsors



National Supporters



# Player Statistics



Round of 16

Paraguay - Japan 0:0 a.e.t. 5:3 PSO

Tshwane/Pretoria / Loftus Versfeld Stadium / RSA



**Japan**  
**4 Marcus Tulio TANAKA**  
 Defender

	1st half	2nd half	Extra time	Total	Team total	Team avg
Goal(s) scored	0	0	0	0	0	
Attempts on/off target	1	1	1	3	11	
Assist(s)	0	0	0	0	0	
Offside(s)	0	0	0	0	1	
Save(s)	0	0	0	0	6	
Yellow card(s)	0	0	0	0	4	
Red card	0	0	0	0	0	
Foul(s) committed	0	0	1	1	29	
Delivery/solo runs into the attacking third	0	3	1	4	32	2.9
Delivery/solo runs into the penalty area	0	0	0	0	11	1.0
Tackles gaining the ball	0	0	0	0	3	0.3
Tackles not gaining the ball	0	0	0	0	1	0.1
Tackles suffered losing the ball	0	0	0	0	2	0.2
Tackles suffered not losing the ball	1	0	0	1	3	0.3
Clearances Completed	0	0	0	0	0	0.0
Clearances Attempted	0	0	1	1	14	1.4

Passing distribution



Direction of play →

Received passing distribution

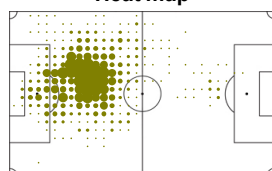


Direction of play →

## Activities

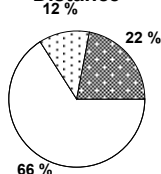
	1st half	2nd half	Extra time	Total	Team total	Team avg
Total time played (mins)	46'02"	48'18"	30'07"	124'27"		
Low activity time spent (%)	83%	89%	87%	86%	84%	
Medium activity time spent (%)	8%	5%	5%	6%	7%	
High activity time spent (%)	9%	6%	8%	8%	9%	
Distance covered (metres)	4,873	3,843	2,708	11,424	133,069	12,097
Low activity distance covered (metres)	3,021	2,704	1,771	7,496	80,649	7,331
Medium activity distance covered (metres)	683	400	307	1,390	18,907	1,719
High activity distance covered (metres)	1,169	740	631	2,540	33,515	3,047
Top speed (km/h)	20.29	24.85	19.64	24.85	29.43	23.48
Sprints	50	18	18	86	1357	157

Heat map



Direction of play →

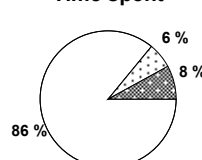
Distance



Activity



Time spent



FIFA does not vouch for the accuracy of technical statistics compiled in association with its competition results system partner.

TUE 29 JUN 2010; 18:51 CET / 18:51 local time - Version 1

Page1/0

2010 FIFA World Cup South Africa™

FIFA Partners



FIFA World Cup Sponsors



National Supporters



# Player Statistics



Round of 16

Paraguay - Japan 0:0 a.e.t. 5:3 PSO

Tshwane/Pretoria / Loftus Versfeld Stadium / RSA



**Japan**  
**5 Yuto NAGATOMO**  
Defender

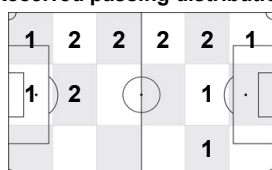
	1st half	2nd half	Extra time	Total	Team total	Team avg
Goal(s) scored	0	0	0	0	0	
Attempts on/off target	0	1	0	1	11	
Assist(s)	0	0	0	0	0	
Offside(s)	0	0	0	0	1	
Save(s)	0	0	0	0	6	
Yellow card(s)	0	1	0	1	4	
Red card	0	0	0	0	0	
Foul(s) committed	0	2	0	2	29	
Delivery/solo runs into the attacking third	1	0	0	1	32	2.9
Delivery/solo runs into the penalty area	0	1	0	1	11	1.0
Tackles gaining the ball	0	1	0	1	3	0.3
Tackles not gaining the ball	0	0	0	0	1	0.1
Tackles suffered losing the ball	0	0	0	0	2	0.2
Tackles suffered not losing the ball	0	0	0	0	3	0.3
Clearances Completed	0	0	0	0	0	0.0
Clearances Attempted	2	1	0	3	14	1.4

Passing distribution



Direction of play →

Received passing distribution

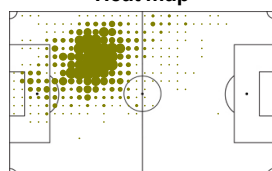


Direction of play →

## Activities

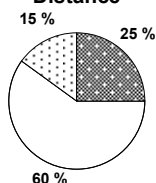
	1st half	2nd half	Extra time	Total	Team total	Team avg
Total time played (mins)	46'02"	48'18"	30'07"	124'27"		
Low activity time spent (%)	86%	84%	83%	84%	84%	
Medium activity time spent (%)	8%	7%	10%	8%	7%	
High activity time spent (%)	6%	9%	7%	8%	9%	
Distance covered (metres)	4,883	4,849	3,254	12,986	133,069	12,097
Low activity distance covered (metres)	3,074	2,862	1,888	7,824	80,649	7,331
Medium activity distance covered (metres)	742	698	560	2,000	18,907	1,719
High activity distance covered (metres)	1,068	1,289	805	3,162	33,515	3,047
Top speed (km/h)	19.27	25.37	23.00	25.37	29.43	23.48
Sprints	37	56	29	122	1357	157

Heat map



Direction of play →

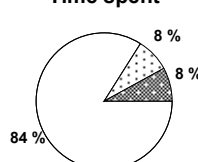
Distance



Activity



Time spent



FIFA does not vouch for the accuracy of technical statistics compiled in association with its competition results system partner.

TUE 29 JUN 2010; 18:51 CET / 18:51 local time - Version 1

Page1/0

2010 FIFA World Cup South Africa™

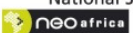
FIFA Partners



FIFA World Cup Sponsors



National Supporters



# Player Statistics



Round of 16

Paraguay - Japan 0:0 a.e.t. 5:3 PSO

Tshwane/Pretoria / Loftus Versfeld Stadium / RSA



**Japan**  
**7 Yasuhiro ENDO**  
Midfield

	1st half	2nd half	Extra time	Total	Team total	Team avg
Goal(s) scored	0	0	0	0	0	
Attempts on/off target	0	0	0	0	11	
Assist(s)	0	0	0	0	0	
Offside(s)	0	0	0	0	1	
Save(s)	0	0	0	0	6	
Yellow card(s)	0	0	1	1	4	
Red card	0	0	0	0	0	
Foul(s) committed	0	3	1	4	29	
Delivery/solo runs into the attacking third	2	3	1	6	32	2.9
Delivery/solo runs into the penalty area	1	2	2	5	11	1.0
Tackles gaining the ball	0	0	0	0	3	0.3
Tackles not gaining the ball	0	0	0	0	1	0.1
Tackles suffered losing the ball	0	0	0	0	2	0.2
Tackles suffered not losing the ball	0	0	0	0	3	0.3
Clearances Completed	0	0	0	0	0	0.0
Clearances Attempted	0	0	0	0	14	1.4

Passing distribution



Direction of play →

Received passing distribution

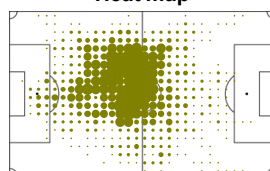


Direction of play →

## Activities

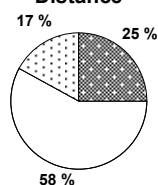
	1st half	2nd half	Extra time	Total	Team total	Team avg
Total time played (mins)	46'02"	48'18"	30'07"	124'27"		
Low activity time spent (%)	81%	80%	80%	80%	84%	
Medium activity time spent (%)	10%	10%	11%	10%	7%	
High activity time spent (%)	9%	10%	9%	10%	9%	
Distance covered (metres)	5,460	5,065	3,317	13,842	133,069	12,097
Low activity distance covered (metres)	3,163	2,987	1,877	8,027	80,649	7,331
Medium activity distance covered (metres)	925	817	586	2,328	18,907	1,719
High activity distance covered (metres)	1,371	1,261	855	3,487	33,515	3,047
Top speed (km/h)	20.29	21.30	20.85	21.30	29.43	23.48
Sprints	53	47	35	135	1357	157

Heat map

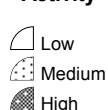


Direction of play →

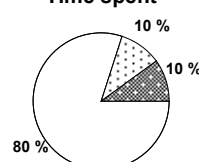
Distance



Activity



Time spent



FIFA does not vouch for the accuracy of technical statistics compiled in association with its competition results system partner.

TUE 29 JUN 2010; 18:51 CET / 18:51 local time - Version 1

Page1/0

2010 FIFA World Cup South Africa™

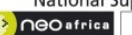
FIFA Partners



FIFA World Cup Sponsors



National Supporters



# Player Statistics



Round of 16

Paraguay - Japan 0:0 a.e.t. 5:3 PSO

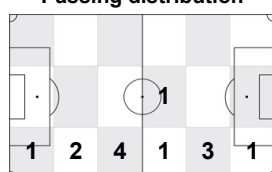
Tshwane/Pretoria / Loftus Versfeld Stadium / RSA



**Japan**  
**8 Daisuke MATSUI**  
Midfield

	1st half	2nd half	Extra time	Total	Team total	Team avg
Goal(s) scored	0	0	0	0	0	
Attempts on/off target	1	0	0	1	11	
Assist(s)	0	0	0	0	0	
Offside(s)	0	0	0	0	1	
Save(s)	0	0	0	0	6	
Yellow card(s)	0	1	0	1	4	
Red card	0	0	0	0	0	
Foul(s) committed	3	1	0	4	29	
Delivery/solo runs into the attacking third	0	0	0	0	32	2.9
Delivery/solo runs into the penalty area	0	0	0	0	11	1.0
Tackles gaining the ball	0	0	0	0	3	0.3
Tackles not gaining the ball	0	0	0	0	1	0.1
Tackles suffered losing the ball	0	0	0	0	2	0.2
Tackles suffered not losing the ball	0	0	0	0	3	0.3
Clearances Completed	0	0	0	0	0	0.0
Clearances Attempted	1	0	0	1	14	1.4

Passing distribution



Direction of play →

Received passing distribution

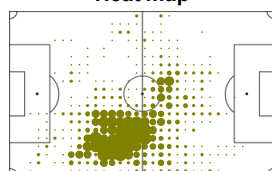


Direction of play →

## Activities

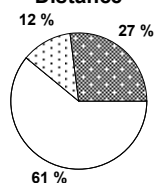
	1st half	2nd half	Extra time	Total	Team total	Team avg
Total time played (mins)	46'02"	20'00"	0'00"	66'02"		
Low activity time spent (%)	81%	85%	0%	83%	84%	
Medium activity time spent (%)	8%	5%	0%	7%	7%	
High activity time spent (%)	11%	10%	0%	10%	9%	
Distance covered (metres)	5,028	2,189	-	7,217	133,069	12,097
Low activity distance covered (metres)	2,997	1,387	-	4,384	80,649	7,331
Medium activity distance covered (metres)	674	217	-	891	18,907	1,719
High activity distance covered (metres)	1,356	584	-	1,940	33,515	3,047
Top speed (km/h)	20.97	22.65	-	22.65	29.43	23.48
Sprints	53	24	-	77	1357	157

Heat map

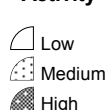


Direction of play →

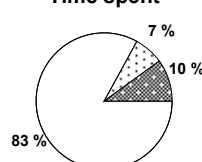
Distance



Activity



Time spent



FIFA does not vouch for the accuracy of technical statistics compiled in association with its competition results system partner.

TUE 29 JUN 2010; 18:51 CET / 18:51 local time - Version 1

Page1/0

2010 FIFA World Cup South Africa™

FIFA Partners



FIFA World Cup Sponsors



National Supporters



# Player Statistics



Round of 16

Paraguay - Japan 0:0 a.e.t. 5:3 PSO

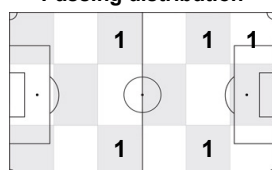
Tshwane/Pretoria / Loftus Versfeld Stadium / RSA



**Japan**  
**9 Shinji OKAZAKI**  
Forward

	1st half	2nd half	Extra time	Total	Team total	Team avg
Goal(s) scored	0	0	0	0	0	
Attempts on/off target	0	0	1	1	11	
Assist(s)	0	0	0	0	0	
Offside(s)	0	0	0	0	1	
Save(s)	0	0	0	0	6	
Yellow card(s)	0	0	0	0	4	
Red card	0	0	0	0	0	
Foul(s) committed	0	1	2	3	29	
Delivery/solo runs into the attacking third	-	0	0	0	32	2.9
Delivery/solo runs into the penalty area	-	0	1	1	11	1.0
Tackles gaining the ball	-	0	0	0	3	0.3
Tackles not gaining the ball	-	0	0	0	1	0.1
Tackles suffered losing the ball	-	0	0	0	2	0.2
Tackles suffered not losing the ball	-	0	0	0	3	0.3
Clearances Completed	-	0	0	0	0	0.0
Clearances Attempted	-	0	0	0	14	1.4

Passing distribution



Direction of play →

Received passing distribution

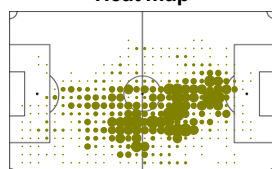


Direction of play →

## Activities

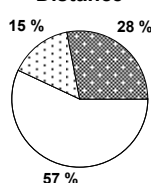
	1st half	2nd half	Extra time	Total	Team total	Team avg
Total time played (mins)	0'00"	28'18"	30'07"	58'25"		
Low activity time spent (%)	0%	80%	81%	80%	84%	
Medium activity time spent (%)	0%	9%	8%	8%	7%	
High activity time spent (%)	0%	11%	11%	12%	9%	
Distance covered (metres)	-	3,074	3,308	6,382	133,069	12,097
Low activity distance covered (metres)	-	1,733	1,887	3,620	80,649	7,331
Medium activity distance covered (metres)	-	466	497	963	18,907	1,719
High activity distance covered (metres)	-	875	924	1,799	33,515	3,047
Top speed (km/h)	-	22.83	20.77	22.83	29.43	23.48
Sprints	-	47	31	78	1357	157

Heat map



Direction of play →

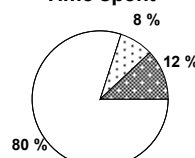
Distance



Activity



Time spent



FIFA does not vouch for the accuracy of technical statistics compiled in association with its competition results system partner.

TUE 29 JUN 2010; 18:51 CET / 18:51 local time - Version 1

Page1/0

2010 FIFA World Cup South Africa™

FIFA Partners



FIFA World Cup Sponsors



National Supporters



# Player Statistics



Round of 16

Paraguay - Japan 0:0 a.e.t. 5:3 PSO

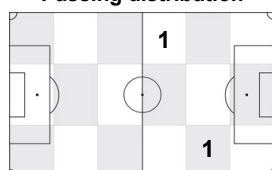
Tshwane/Pretoria / Loftus Versfeld Stadium / RSA



**Japan**  
**11 Keiji TAMADA**  
Forward

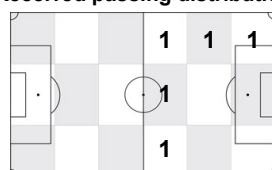
	1st half	2nd half	Extra time	Total	Team total	Team avg
Goal(s) scored	0	0	0	0	0	
Attempts on/off target	0	0	0	0	11	
Assist(s)	0	0	0	0	0	
Offside(s)	0	0	0	0	1	
Save(s)	0	0	0	0	6	
Yellow card(s)	0	0	0	0	4	
Red card	0	0	0	0	0	
Foul(s) committed	0	0	0	0	29	
Delivery/solo runs into the attacking third	-	-	0	0	32	2.9
Delivery/solo runs into the penalty area	-	-	0	0	11	1.0
Tackles gaining the ball	-	-	0	0	3	0.3
Tackles not gaining the ball	-	-	0	0	1	0.1
Tackles suffered losing the ball	-	-	0	0	2	0.2
Tackles suffered not losing the ball	-	-	1	1	3	0.3
Clearances Completed	-	-	0	0	0	0.0
Clearances Attempted	-	-	0	0	14	1.4

Passing distribution



Direction of play →

Received passing distribution

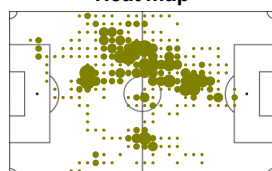


Direction of play →

## Activities

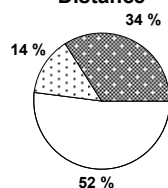
	1st half	2nd half	Extra time	Total	Team total	Team avg
Total time played (mins)	0'00"	0'00"	15'01"	15'01"		
Low activity time spent (%)	0%	0%	79%	79%	84%	
Medium activity time spent (%)	0%	0%	8%	8%	7%	
High activity time spent (%)	0%	0%	13%	13%	9%	
Distance covered (metres)	-	-	1,851	1,851	133,069	12,097
Low activity distance covered (metres)	-	-	964	964	80,649	7,331
Medium activity distance covered (metres)	-	-	257	257	18,907	1,719
High activity distance covered (metres)	-	-	630	630	33,515	3,047
Top speed (km/h)	-	-	23.00	23.00	29.43	23.48
Sprints	-	-	26	26	1357	157

Heat map



Direction of play →

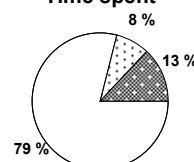
Distance



Activity



Time spent



FIFA does not vouch for the accuracy of technical statistics compiled in association with its competition results system partner.

TUE 29 JUN 2010; 18:51 CET / 18:51 local time - Version 1

Page1/0

2010 FIFA World Cup South Africa™

FIFA Partners



FIFA World Cup Sponsors



National Supporters





# Player Statistics



Round of 16

Paraguay - Japan 0:0 a.e.t. 5:3 PSO

Tshwane/Pretoria / Loftus Versfeld Stadium / RSA



**Japan**  
**14 Kengo NAKAMURA**  
Midfield

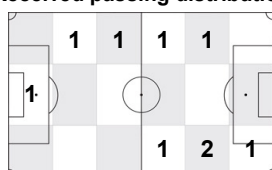
	1st half	2nd half	Extra time	Total	Team total	Team avg
Goal(s) scored	0	0	0	0	0	
Attempts on/off target	0	0	0	0	11	
Assist(s)	0	0	0	0	0	
Offside(s)	0	0	0	0	1	
Save(s)	0	0	0	0	6	
Yellow card(s)	0	0	0	0	4	
Red card	0	0	0	0	0	
Foul(s) committed	0	0	1	1	29	
Delivery/solo runs into the attacking third	-	0	1	1	32	2.9
Delivery/solo runs into the penalty area	-	0	0	0	11	1.0
Tackles gaining the ball	-	0	0	0	3	0.3
Tackles not gaining the ball	-	0	0	0	1	0.1
Tackles suffered losing the ball	-	0	0	0	2	0.2
Tackles suffered not losing the ball	-	0	0	0	3	0.3
Clearances Completed	-	0	0	0	0	0.0
Clearances Attempted	-	0	0	0	14	1.4

Passing distribution



Direction of play →

Received passing distribution

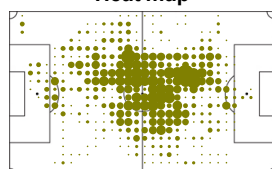


Direction of play →

## Activities

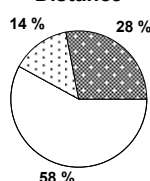
	1st half	2nd half	Extra time	Total	Team total	Team avg
Total time played (mins)	0'00"	12'43"	30'07"	42'50"		
Low activity time spent (%)	0%	83%	83%	83%	84%	
Medium activity time spent (%)	0%	7%	8%	7%	7%	
High activity time spent (%)	0%	10%	9%	10%	9%	
Distance covered (metres)	-	1,289	3,293	4,582	133,069	12,097
Low activity distance covered (metres)	-	760	1,891	2,651	80,649	7,331
Medium activity distance covered (metres)	-	156	463	619	18,907	1,719
High activity distance covered (metres)	-	372	940	1,312	33,515	3,047
Top speed (km/h)	-	17.47	28.11	28.11	29.43	23.48
Sprints	-	12	37	49	1357	157

Heat map



Direction of play →

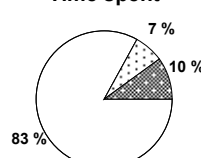
Distance



Activity



Time spent



FIFA does not vouch for the accuracy of technical statistics compiled in association with its competition results system partner.

TUE 29 JUN 2010; 18:51 CET / 18:51 local time - Version 1

Page1/0

2010 FIFA World Cup South Africa™

FIFA Partners



FIFA World Cup Sponsors



National Supporters



# Player Statistics



Round of 16

Paraguay - Japan 0:0 a.e.t. 5:3 PSO

Tshwane/Pretoria / Loftus Versfeld Stadium / RSA



**Japan**  
**16 Yoshito OKUBO**  
Forward

	1st half	2nd half	Extra time	Total	Team total	Team avg
Goal(s) scored	0	0	0	0	0	
Attempts on/off target	1	0	0	1	11	
Assist(s)	0	0	0	0	0	
Offside(s)	0	1	0	1	1	
Save(s)	0	0	0	0	6	
Yellow card(s)	0	0	0	0	4	
Red card	0	0	0	0	0	
Foul(s) committed	2	1	1	4	29	
Delivery/solo runs into the attacking third	3	0	1	4	32	2.9
Delivery/solo runs into the penalty area	0	0	0	0	11	1.0
Tackles gaining the ball	0	0	0	0	3	0.3
Tackles not gaining the ball	0	0	0	0	1	0.1
Tackles suffered losing the ball	0	0	0	0	2	0.2
Tackles suffered not losing the ball	0	0	0	0	3	0.3
Clearances Completed	0	0	0	0	0	0.0
Clearances Attempted	0	0	0	0	14	1.4

Passing distribution



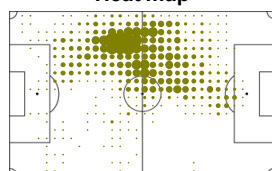
Received passing distribution



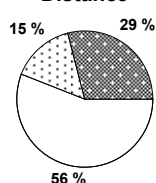
## Activities

	1st half	2nd half	Extra time	Total	Team total	Team avg
Total time played (mins)	46'02"	48'18"	15'06"	109'26"		
Low activity time spent (%)	80%	83%	82%	81%	84%	
Medium activity time spent (%)	9%	7%	8%	8%	7%	
High activity time spent (%)	11%	10%	10%	11%	9%	
Distance covered (metres)	5,283	4,639	1,587	11,509	133,069	12,097
Low activity distance covered (metres)	2,930	2,644	842	6,416	80,649	7,331
Medium activity distance covered (metres)	800	594	293	1,687	18,907	1,719
High activity distance covered (metres)	1,554	1,401	451	3,406	33,515	3,047
Top speed (km/h)	20.65	20.55	19.22	20.65	29.43	23.48
Sprints	69	72	17	158	1357	157

Heat map



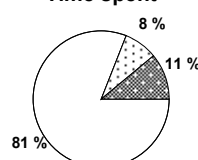
Distance



Activity



Time spent



FIFA does not vouch for the accuracy of technical statistics compiled in association with its competition results system partner.

TUE 29 JUN 2010; 18:51 CET / 18:51 local time - Version 1

Page1/0

2010 FIFA World Cup South Africa™

FIFA Partners



FIFA World Cup Sponsors



National Supporters



# Player Statistics



Round of 16

Paraguay - Japan 0:0 a.e.t. 5:3 PSO

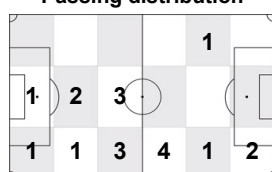
Tshwane/Pretoria / Loftus Versfeld Stadium / RSA



**Japan**  
**17 Makoto HASEBE**  
Midfield

	1st half	2nd half	Extra time	Total	Team total	Team avg
Goal(s) scored	0	0	0	0	0	
Attempts on/off target	0	0	0	0	11	
Assist(s)	0	0	0	0	0	
Offside(s)	0	0	0	0	1	
Save(s)	0	0	0	0	6	
Yellow card(s)	0	0	0	0	4	
Red card	0	0	0	0	0	
Foul(s) committed	0	2	0	2	29	
Delivery/solo runs into the attacking third	1	1	0	2	32	2.9
Delivery/solo runs into the penalty area	0	1	0	1	11	1.0
Tackles gaining the ball	0	0	0	0	3	0.3
Tackles not gaining the ball	0	0	0	0	1	0.1
Tackles suffered losing the ball	0	0	0	0	2	0.2
Tackles suffered not losing the ball	0	0	0	0	3	0.3
Clearances Completed	0	0	0	0	0	0.0
Clearances Attempted	0	1	0	1	14	1.4

Passing distribution



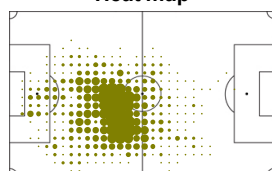
Received passing distribution



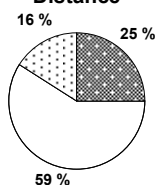
## Activities

	1st half	2nd half	Extra time	Total	Team total	Team avg
Total time played (mins)	46'02"	48'18"	30'07"	124'27"		
Low activity time spent (%)	79%	84%	85%	82%	84%	
Medium activity time spent (%)	10%	8%	7%	9%	7%	
High activity time spent (%)	11%	8%	8%	9%	9%	
Distance covered (metres)	5,340	4,684	3,108	13,132	133,069	12,097
Low activity distance covered (metres)	2,931	2,914	1,893	7,738	80,649	7,331
Medium activity distance covered (metres)	901	773	480	2,154	18,907	1,719
High activity distance covered (metres)	1,507	996	735	3,238	33,515	3,047
Top speed (km/h)	22.83	20.60	23.18	23.18	29.43	23.48
Sprints	79	38	17	134	1357	157

Heat map



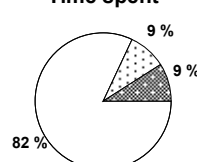
Distance



Activity



Time spent



FIFA does not vouch for the accuracy of technical statistics compiled in association with its competition results system partner.

TUE 29 JUN 2010; 18:51 CET / 18:51 local time - Version 1

Page1/0

2010 FIFA World Cup South Africa™

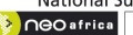
FIFA Partners



FIFA World Cup Sponsors



National Supporters



# Player Statistics



Round of 16

Paraguay - Japan 0:0 a.e.t. 5:3 PSO

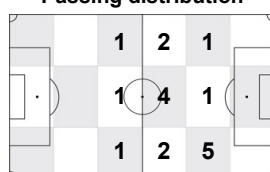
Tshwane/Pretoria / Loftus Versfeld Stadium / RSA



**Japan**  
**18 Keisuke HONDA**  
Midfield

	1st half	2nd half	Extra time	Total	Team total	Team avg
Goal(s) scored	0	0	0	0	0	
Attempts on/off target	1	0	1	2	11	
Assist(s)	0	0	0	0	0	
Offside(s)	0	0	0	0	1	
Save(s)	0	0	0	0	6	
Yellow card(s)	0	1	0	1	4	
Red card	0	0	0	0	0	
Foul(s) committed	1	3	3	7	29	
Delivery/solo runs into the attacking third	0	1	0	1	32	2.9
Delivery/solo runs into the penalty area	0	0	0	0	11	1.0
Tackles gaining the ball	0	0	0	0	3	0.3
Tackles not gaining the ball	0	0	0	0	1	0.1
Tackles suffered losing the ball	0	1	0	1	2	0.2
Tackles suffered not losing the ball	1	0	0	1	3	0.3
Clearances Completed	0	0	0	0	0	0.0
Clearances Attempted	0	0	0	0	14	1.4

Passing distribution



Direction of play →

Received passing distribution

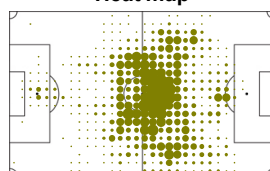


Direction of play →

## Activities

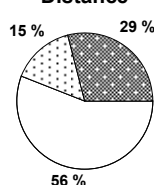
	1st half	2nd half	Extra time	Total	Team total	Team avg
Total time played (mins)	46'02"	48'18"	30'07"	124'27"		
Low activity time spent (%)	77%	83%	84%	81%	84%	
Medium activity time spent (%)	11%	8%	7%	9%	7%	
High activity time spent (%)	12%	9%	9%	10%	9%	
Distance covered (metres)	5,315	4,691	2,989	12,995	133,069	12,097
Low activity distance covered (metres)	2,803	2,720	1,750	7,273	80,649	7,331
Medium activity distance covered (metres)	865	712	405	1,982	18,907	1,719
High activity distance covered (metres)	1,648	1,260	835	3,743	33,515	3,047
Top speed (km/h)	22.86	29.43	20.85	29.43	29.43	23.48
Sprints	67	44	37	148	1357	157

Heat map

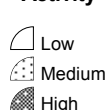


Direction of play →

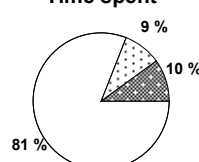
Distance



Activity



Time spent



FIFA does not vouch for the accuracy of technical statistics compiled in association with its competition results system partner.

TUE 29 JUN 2010; 18:51 CET / 18:51 local time - Version 1

Page1/0

2010 FIFA World Cup South Africa™

FIFA Partners



FIFA World Cup Sponsors



National Supporters



# Player Statistics



Round of 16

Paraguay - Japan 0:0 a.e.t. 5:3 PSO

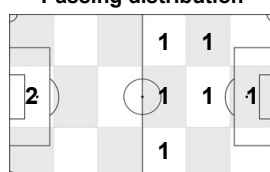
Tshwane/Pretoria / Loftus Versfeld Stadium / RSA



**Japan**  
**21 Eiji KAWASHIMA**  
 Goalkeeper

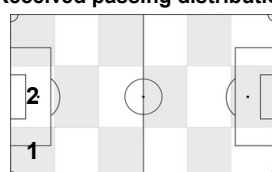
	1st half	2nd half	Extra time	Total	Team total	Team avg
Goal(s) scored	0	0	0	0	0	
Attempts on/off target	0	0	0	0	11	
Assist(s)	0	0	0	0	0	
Offside(s)	0	0	0	0	1	
Save(s)	1	2	3	6	6	
Yellow card(s)	0	0	0	0	4	
Red card	0	0	0	0	0	
Foul(s) committed	0	0	0	0	29	
Delivery/solo runs into the attacking third	0	0	3	3	32	2.9
Delivery/solo runs into the penalty area	0	0	1	1	11	1.0
Tackles gaining the ball	0	0	0	0	3	0.3
Tackles not gaining the ball	0	0	0	0	1	0.1
Tackles suffered losing the ball	0	0	0	0	2	0.2
Tackles suffered not losing the ball	0	0	0	0	3	0.3
Clearances Completed	0	0	0	0	0	0.0
Clearances Attempted	1	0	1	2	14	1.4

Passing distribution



Direction of play →

Received passing distribution

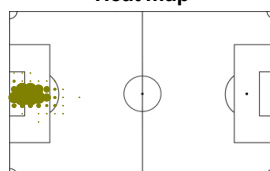


Direction of play →

## Activities

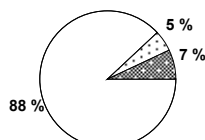
	1st half	2nd half	Extra time	Total	Team total	Team avg
Total time played (mins)	46'02"	48'18"	30'07"	124'27"		
Low activity time spent (%)	98%	98%	98%	98%	84%	
Medium activity time spent (%)	1%	1%	2%	1%	7%	
High activity time spent (%)	1%	1%	0%	1%	9%	
Distance covered (metres)	1,917	1,851	1,349	5,117	133,069	12,097
Low activity distance covered (metres)	1,706	1,649	1,157	4,512	80,649	7,331
Medium activity distance covered (metres)	104	81	93	278	18,907	1,719
High activity distance covered (metres)	108	121	98	327	33,515	3,047
Top speed (km/h)	14.27	21.69	18.05	21.69	29.43	23.48
Sprints	6	6	2	14	1357	157

Heat map

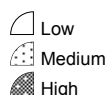


Direction of play →

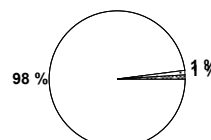
Distance



Activity



Time spent



FIFA does not vouch for the accuracy of technical statistics compiled in association with its competition results system partner.

TUE 29 JUN 2010; 18:51 CET / 18:51 local time - Version 1

Page1/0

2010 FIFA World Cup South Africa™

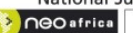
FIFA Partners



FIFA World Cup Sponsors



National Supporters



# Player Statistics



Round of 16

Paraguay - Japan 0:0 a.e.t. 5:3 PSO

Tshwane/Pretoria / Loftus Versfeld Stadium / RSA



**Japan**  
**22 Yuji NAKAZAWA**  
Defender

	1st half	2nd half	Extra time	Total	Team total	Team avg
Goal(s) scored	0	0	0	0	0	
Attempts on/off target	0	0	0	0	11	
Assist(s)	0	0	0	0	0	
Offside(s)	0	0	0	0	1	
Save(s)	0	0	0	0	6	
Yellow card(s)	0	0	0	0	4	
Red card	0	0	0	0	0	
Foul(s) committed	0	0	0	0	29	
Delivery/solo runs into the attacking third	0	2	1	3	32	2.9
Delivery/solo runs into the penalty area	0	0	0	0	11	1.0
Tackles gaining the ball	0	0	0	0	3	0.3
Tackles not gaining the ball	0	0	0	0	1	0.1
Tackles suffered losing the ball	0	0	0	0	2	0.2
Tackles suffered not losing the ball	0	0	0	0	3	0.3
Clearances Completed	0	0	0	0	0	0.0
Clearances Attempted	0	1	0	1	14	1.4

Passing distribution



Direction of play →

Received passing distribution

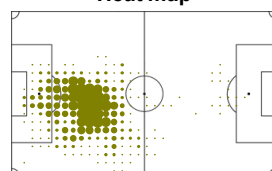


Direction of play →

## Activities

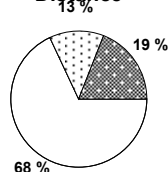
	1st half	2nd half	Extra time	Total	Team total	Team avg
Total time played (mins)	46'02"	48'18"	30'07"	124'27"		
Low activity time spent (%)	88%	89%	88%	88%	84%	
Medium activity time spent (%)	6%	6%	6%	6%	7%	
High activity time spent (%)	6%	5%	6%	6%	9%	
Distance covered (metres)	4,234	4,005	2,823	11,062	133,069	12,097
Low activity distance covered (metres)	2,888	2,760	1,838	7,486	80,649	7,331
Medium activity distance covered (metres)	511	527	349	1,387	18,907	1,719
High activity distance covered (metres)	835	718	637	2,190	33,515	3,047
Top speed (km/h)	20.29	20.95	18.96	20.95	29.43	23.48
Sprints	29	30	31	90	1357	157

Heat map



Direction of play →

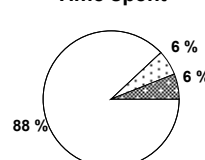
Distance



Activity



Time spent



FIFA does not vouch for the accuracy of technical statistics compiled in association with its competition results system partner.

TUE 29 JUN 2010; 18:51 CET / 18:51 local time - Version 1

Page1/0

2010 FIFA World Cup South Africa™

FIFA Partners



FIFA World Cup Sponsors



National Supporters



