

## Match Report



Group E

Denmark - Japan 1:3 (0:2)

# 43 24 JUN 2010 20:30 Rustenburg / Royal Bafokeng Stadium / RSA Att. 27,967

Referee: Jerome DAMON (RSA)  
 Assistant Referee 1: Celestin NTAGUNGIRA (RWA)  
 4th Official: Martin HANSSON (SWE)  
 Match Commissioner: Luis CHIRIBOGA (ECU)

Assistant Referee 2: Enoch MOLEFE (RSA)  
 Reserve Assistant Referee: Henrik ANDREN (SWE)  
 General Coordinator: Peter MONTOPOLI (CAN)

## Goals Scored:

Keisuke HONDA (JPN) 17' , Yasuhito ENDO (JPN) 30' , Jon Dahl TOMASSON (DEN) 81' , Shinji OKAZAKI (JPN) 87'

## Denmark (DEN)

[ 1] Thomas SORENSEN (GK)  
 [ 2] Christian POULSEN  
 [ 4] Daniel AGGER  
 [ 6] Lars JACOBSEN  
 [ 9] Jon Dahl TOMASSON (C)  
 [ 10] Martin JORGENSEN (-34')  
 [ 11] Nicklas BENDTNER  
 [ 12] Thomas KAHLENBERG (-63')  
 [ 13] Per KROLDROP (-56')  
 [ 15] Simon POULSEN  
 [ 19] Dennis ROMMEDAHL

## Substitutes:

[ 5] William KVIST  
 [ 7] Daniel JENSEN  
 [ 8] Jesper GRONKJAER  
 [ 14] Jakob POULSEN (+34')  
 [ 16] Stephan ANDERSEN (GK)  
 [ 17] Mikkel BECKMANN  
 [ 18] Soren LARSEN (+56')  
 [ 20] Thomas ENEVOLDSEN  
 [ 21] Christian ERIKSEN (+63')  
 [ 22] Jesper CHRISTIANSEN (GK)  
 [ 23] Patrick MTILIGA  
 [ 3] Simon KJAER (N)

Coach Morten OLSEN (DEN)

## Japan (JPN)

[ 21] Eiji KAWASHIMA (GK)  
 [ 2] Yuki ABE  
 [ 3] Yuichi KOMANO  
 [ 4] Marcus Tulio TANAKA  
 [ 5] Yuto NAGATOMO  
 [ 7] Yasuhito ENDO (-90'+1)  
 [ 8] Daisuke MATSUI (-74')  
 [ 16] Yoshito OKUBO (-88')  
 [ 17] Makoto HASEBE (C)  
 [ 18] Keisuke HONDA  
 [ 22] Yuji NAKAZAWA

## Substitutes:

[ 1] Seigo NARAZAKI (GK)  
 [ 6] Atsuto UCHIDA  
 [ 9] Shinji OKAZAKI (+74')  
 [ 10] Shunsuke NAKAMURA  
 [ 11] Keiji TAMADA  
 [ 12] Kisho YANO  
 [ 13] Daiki IWAMASA  
 [ 14] Kengo NAKAMURA  
 [ 15] Yasuyuki KONNO (+88')  
 [ 19] Takayuki MORIMOTO  
 [ 20] Junichi INAMOTO (+90'+1)  
 [ 23] Yoshikatsu KAWAGUCHI (GK)

Coach Takeshi OKADA (JPN)

## Cautions:

Yasuhito ENDO (JPN) 12' , Yuto NAGATOMO (JPN) 26' , Per KROLDROP (DEN) 29' , Christian POULSEN (DEN) 48' , Nicklas BENDTNER (DEN) 66'

## Expulsions:

## Additional Time:

First half: 2 min., second half: 4 min.

Att: Attendance  
 GK: Goalkeeper  
 (C): Captain

A: Absent  
 I: Injured  
 N: Not eligible to Play

AET: After extra time  
 2Y=R: Second Yellow Card  
 PSO: Penalty shoot-out

Y: Yellow Card  
 R: Red Card

THU 24 JUN 2010; 22:26 CET / 22:26 local time - Version 1

Page1/2

2010 FIFA World Cup South Africa™

FIFA Partners



FIFA World Cup Sponsors



National Supporters



## Game Statistics



Group E

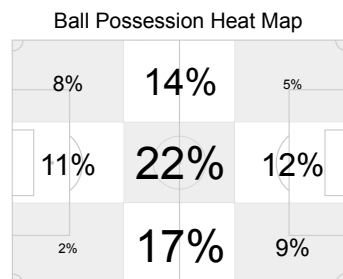
Denmark - Japan 1:3 (0:2)

# 43 24 JUN 2010 20:30 Rustenburg / Royal Bafokeng Stadium / RSA

Att. 27,967

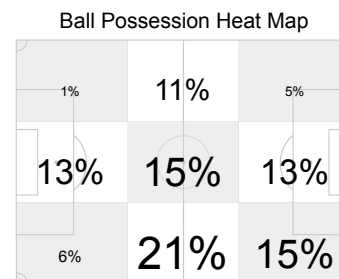
## Denmark (DEN)

## Japan (JPN)



Attacking direction →

|     |                                  |     |
|-----|----------------------------------|-----|
| 19  | Shots                            | 15  |
| 7   | Shots on Goal                    | 10  |
| 23  | Fouls                            | 10  |
| 7   | Corner Kicks                     | 2   |
| 1   | Direct Free Kicks to Goal        | 2   |
| 0   | Indirect Free Kicks to Goal      | 0   |
| 1/0 | Penalty Kicks/Converted          | 0/0 |
| 0   | Offsides                         | 5   |
| 0   | Own Goals                        | 0   |
| 3   | Cautions                         | 2   |
| 0   | Expulsions due to Second Caution | 0   |
| 0   | Direct Expulsions                | 0   |
| 56% | Ball Possession                  | 44% |
| 37  | Actual Playing Time              | 29  |



Attacking direction →

Man of the Match: 18, Keisuke HONDA (Japan)

## Denmark (DEN)

| #                  | Name                  | Pos | Min | GS | GA | SG/S | PK   | Fouls |    | Y  | 2Y=R | R |  |
|--------------------|-----------------------|-----|-----|----|----|------|------|-------|----|----|------|---|--|
|                    |                       |     |     |    |    |      |      | FC    | FS |    |      |   |  |
| 1                  | Thomas SORENSEN       | GK  | 90  |    | 3  |      |      |       |    |    |      |   |  |
| 2                  | Christian POULSEN     | M   | 90  |    |    | 1/1  |      | 5     | 1  | 1  |      |   |  |
| 4                  | Daniel AGGER          | D   | 90  |    |    | 1/3  |      | 4     | 3  |    |      |   |  |
| 6                  | Lars JACOBSEN         | D   | 90  |    |    |      |      |       | 1  |    |      |   |  |
| 9                  | Jon Dahl TOMASSON (C) | F   | 90  | 1  |    | 3/5  | 0/1  | 1     |    |    |      |   |  |
| 10                 | Martin JORGENSEN      | M   | 34  |    |    | 0/1  |      |       |    |    |      |   |  |
| 11                 | Nicklas BENDTNER      | F   | 90  |    |    | 0/1  |      | 3     | 3  | 1  |      |   |  |
| 12                 | Thomas KAHLENBERG     | M   | 63  |    |    | 0/1  |      | 1     | 1  |    |      |   |  |
| 13                 | Per KROLDROP          | D   | 56  |    |    | 0/1  |      | 1     |    | 1  |      |   |  |
| 15                 | Simon POULSEN         | D   | 90  |    |    | 0/1  |      | 2     |    |    |      |   |  |
| 19                 | Dennis ROMMEDAHL      | F   | 90  |    |    |      |      | 3     | 1  |    |      |   |  |
| <b>Substitutes</b> |                       |     |     |    |    |      |      |       |    |    |      |   |  |
| 14                 | Jakob POULSEN         | M   | 56  |    |    | 1/2  |      |       |    |    |      |   |  |
| 18                 | Soren LARSEN          | F   | 34  |    |    | 1/2  |      | 3     |    |    |      |   |  |
| 21                 | Christian ERIKSEN     | M   | 27  |    |    | 0/1  |      |       |    |    |      |   |  |
| <b>Totals</b>      |                       |     |     |    | 1  | 3    | 7/19 | 0/1   | 23 | 10 | 3    |   |  |

## Japan (JPN)

| #                  | Name                | Pos | Min | GS | GA | SG/S | PK    | Fouls |    | Y  | 2Y=R | R |  |
|--------------------|---------------------|-----|-----|----|----|------|-------|-------|----|----|------|---|--|
|                    |                     |     |     |    |    |      |       | FC    | FS |    |      |   |  |
| 21                 | Eiji KAWASHIMA      | GK  | 90  |    | 1  |      |       |       | 1  |    |      |   |  |
| 2                  | Yuki ABE            | M   | 90  |    |    |      |       | 1     | 1  |    |      |   |  |
| 3                  | Yuichi KOMANO       | D   | 90  |    |    | 1/1  |       |       |    |    |      |   |  |
| 4                  | Marcus Tulio TANAKA | D   | 90  |    |    | 0/1  |       | 3     |    |    |      |   |  |
| 5                  | Yuto NAGATOMO       | D   | 90  |    |    | 1/2  |       | 1     |    | 1  |      |   |  |
| 7                  | Yasuhito ENDO       | M   | 89  | 1  |    | 2/2  |       |       |    | 1  |      |   |  |
| 8                  | Daisuke MATSUI      | M   | 74  |    |    | 1/2  |       | 1     | 1  |    |      |   |  |
| 16                 | Yoshito OKUBO       | F   | 88  |    |    | 2/2  |       | 2     | 2  |    |      |   |  |
| 17                 | Makoto HASEBE (C)   | M   | 90  |    |    | 0/1  |       | 3     | 2  |    |      |   |  |
| 18                 | Keisuke HONDA       | M   | 90  | 1  |    | 1/2  |       | 2     | 7  |    |      |   |  |
| 22                 | Yuji NAKAZAWA       | D   | 90  |    |    |      |       |       | 4  |    |      |   |  |
| <b>Substitutes</b> |                     |     |     |    |    |      |       |       |    |    |      |   |  |
| 9                  | Shinji OKAZAKI      | F   | 16  | 1  |    | 2/2  |       |       | 1  |    |      |   |  |
| 15                 | Yasuyuki KONNO      | D   | 2   |    |    |      |       |       |    |    |      |   |  |
| 20                 | Junichi INAMOTO     | M   | 1   |    |    |      |       |       | 1  |    |      |   |  |
| <b>Totals</b>      |                     |     |     |    | 3  | 1    | 10/15 |       | 10 | 23 | 2    |   |  |

Pos: Position  
 GK: Goalkeeper  
 M: Midfielder  
 D: Defender  
 F: Forward  
 (C): Captain

Min: Minutes Played  
 GS: Goals Scored  
 GA: Goals Against  
 Y: Yellow Card  
 R: Red Card  
 2Y=R: Expulsion due to Second Caution

FC: Fouls Committed  
 FS: Fouls Suffered  
 SG/S: Shots on Goal/Shots  
 PK: Penalty Kicks(Goals/Shots)

THU 24 JUN 2010; 22:26 CET / 22:26 local time - Version 1

Page2/2

2010 FIFA World Cup South Africa™

FIFA Partners



FIFA World Cup Sponsors



National Supporters

