

Player Statistics



Group E

Netherlands - Japan 1:0 (0:0)

Durban / Durban Stadium / RSA



Japan
2 Yuki ABE
Midfield

	1st half	2nd half	Total	Team total	Team avg
Goal(s) scored	0	0	0	0	
Attempts on/off target	0	1	1	10	
Assist(s)	0	0	0	0	
Offside(s)	0	0	0	1	
Save(s)	0	0	0	0	
Yellow card(s)	0	0	0	0	
Red card	0	0	0	0	
Foul(s) committed	0	0	0	11	
Delivery/solo runs into the attacking third	0	1	1	18	1.7
Delivery/solo runs into the penalty area	0	1	1	4	0.4
Tackles gaining the ball	0	0	0	0	0.0
Tackles not gaining the ball	0	0	0	2	0.2
Tackles suffered losing the ball	0	0	0	3	0.3
Tackles suffered not losing the ball	0	0	0	4	0.4
Clearances Completed	0	0	0	1	0.1
Clearances Attempted	0	1	1	10	1.0

Passing distribution



Direction of play →

Received passing distribution

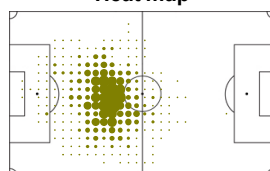


Direction of play →

Activities

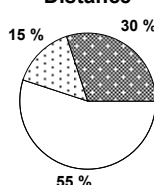
	1st half	2nd half	Total	Team total	Team avg
Total time played (mins)	46'04"	48'02"	94'06"		
Low activity time spent (%)	80%	81%	80%	82%	
Medium activity time spent (%)	9%	8%	9%	8%	
High activity time spent (%)	11%	11%	11%	10%	
Distance covered (metres)	5,295	5,478	10,773	108,606	9,868
Low activity distance covered (metres)	2,905	3,021	5,926	61,535	5,591
Medium activity distance covered (metres)	866	779	1,645	16,576	1,506
High activity distance covered (metres)	1,524	1,679	3,203	30,495	2,771
Top speed (km/h)	19.04	23.38	23.38	26.70	21.38
Sprints	64	76	140	1206	138

Heat map

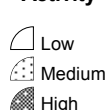


Direction of play →

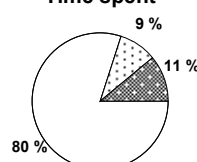
Distance



Activity



Time spent



FIFA does not vouch for the accuracy of technical statistics compiled in association with its competition results system partner.

SAT 19 JUN 2010; 15:30 CET / 15:30 local time - Version 1

Page1/0

2010 FIFA World Cup South Africa™

FIFA Partners



FIFA World Cup Sponsors



National Supporters



Player Statistics



Group E

Netherlands - Japan 1:0 (0:0)

Durban / Durban Stadium / RSA



Japan
3 Yuichi KOMANO
 Defender

	1st half	2nd half	Total	Team total	Team avg
Goal(s) scored	0	0	0	0	
Attempts on/off target	0	0	0	10	
Assist(s)	0	0	0	0	
Offside(s)	0	0	0	1	
Save(s)	0	0	0	0	
Yellow card(s)	0	0	0	0	
Red card	0	0	0	0	
Foul(s) committed	1	0	1	11	
Delivery/solo runs into the attacking third	0	2	2	18	1.7
Delivery/solo runs into the penalty area	0	0	0	4	0.4
Tackles gaining the ball	0	0	0	0	0.0
Tackles not gaining the ball	0	0	0	2	0.2
Tackles suffered losing the ball	0	0	0	3	0.3
Tackles suffered not losing the ball	0	0	0	4	0.4
Clearances Completed	0	0	0	1	0.1
Clearances Attempted	1	0	1	10	1.0

Passing distribution



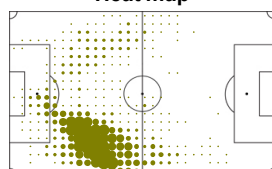
Received passing distribution



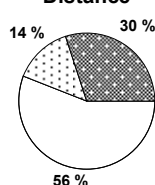
Activities

	1st half	2nd half	Total	Team total	Team avg
Total time played (mins)	46'04"	48'02"	94'06"		
Low activity time spent (%)	83%	82%	83%	82%	
Medium activity time spent (%)	7%	7%	7%	8%	
High activity time spent (%)	10%	11%	10%	10%	
Distance covered (metres)	4,747	5,162	9,909	108,606	9,868
Low activity distance covered (metres)	2,704	2,797	5,501	61,535	5,591
Medium activity distance covered (metres)	654	770	1,424	16,576	1,506
High activity distance covered (metres)	1,389	1,595	2,984	30,495	2,771
Top speed (km/h)	23.67	20.48	23.67	26.70	21.38
Sprints	55	58	113	1206	138

Heat map



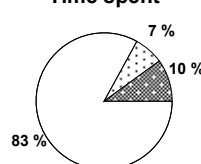
Distance



Activity



Time spent



FIFA does not vouch for the accuracy of technical statistics compiled in association with its competition results system partner.

SAT 19 JUN 2010; 15:30 CET / 15:30 local time - Version 1

Page1/0

2010 FIFA World Cup South Africa™

FIFA Partners



FIFA World Cup Sponsors



National Supporters



Player Statistics



Group E

Netherlands - Japan 1:0 (0:0)

Durban / Durban Stadium / RSA



Japan
4 Marcus Tulio TANAKA
 Defender

	1st half	2nd half	Total	Team total	Team avg
Goal(s) scored	0	0	0	0	
Attempts on/off target	1	0	1	10	
Assist(s)	0	0	0	0	
Offside(s)	0	0	0	1	
Save(s)	0	0	0	0	
Yellow card(s)	0	0	0	0	
Red card	0	0	0	0	
Foul(s) committed	0	1	1	11	
Delivery/solo runs into the attacking third	1	1	2	18	1.7
Delivery/solo runs into the penalty area	0	0	0	4	0.4
Tackles gaining the ball	0	0	0	0	0.0
Tackles not gaining the ball	1	0	1	2	0.2
Tackles suffered losing the ball	0	0	0	3	0.3
Tackles suffered not losing the ball	0	1	1	4	0.4
Clearances Completed	0	0	0	1	0.1
Clearances Attempted	0	3	3	10	1.0

Passing distribution



Direction of play →

Received passing distribution

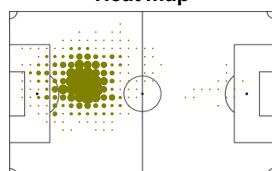


Direction of play →

Activities

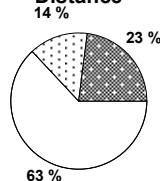
	1st half	2nd half	Total	Team total	Team avg
Total time played (mins)	46'04"	48'02"	94'06"		
Low activity time spent (%)	88%	85%	87%	82%	
Medium activity time spent (%)	7%	6%	7%	8%	
High activity time spent (%)	5%	9%	6%	10%	
Distance covered (metres)	4,393	4,965	9,358	108,606	9,868
Low activity distance covered (metres)	2,978	2,961	5,939	61,535	5,591
Medium activity distance covered (metres)	665	637	1,302	16,576	1,506
High activity distance covered (metres)	750	1,366	2,116	30,495	2,771
Top speed (km/h)	17.59	22.68	22.68	26.70	21.38
Sprints	19	58	77	1206	138

Heat map



Direction of play →

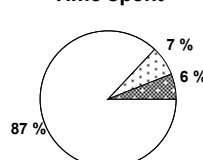
Distance



Activity



Time spent



FIFA does not vouch for the accuracy of technical statistics compiled in association with its competition results system partner.

SAT 19 JUN 2010; 15:30 CET / 15:30 local time - Version 1

Page1/0

2010 FIFA World Cup South Africa™

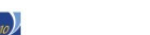
FIFA Partners



FIFA World Cup Sponsors



National Supporters



Player Statistics



Group E

Netherlands - Japan 1:0 (0:0)

Durban / Durban Stadium / RSA



Japan
5 Yuto NAGATOMO
 Defender

	1st half	2nd half	Total	Team total	Team avg
Goal(s) scored	0	0	0	0	
Attempts on/off target	1	0	1	10	
Assist(s)	0	0	0	0	
Offside(s)	0	0	0	1	
Save(s)	0	0	0	0	
Yellow card(s)	0	0	0	0	
Red card	0	0	0	0	
Foul(s) committed	1	0	1	11	
Delivery/solo runs into the attacking third	0	0	0	18	1.7
Delivery/solo runs into the penalty area	0	0	0	4	0.4
Tackles gaining the ball	0	0	0	0	0.0
Tackles not gaining the ball	0	0	0	2	0.2
Tackles suffered losing the ball	0	0	0	3	0.3
Tackles suffered not losing the ball	0	0	0	4	0.4
Clearances Completed	0	0	0	1	0.1
Clearances Attempted	0	0	0	10	1.0

Passing distribution



Direction of play →

Received passing distribution

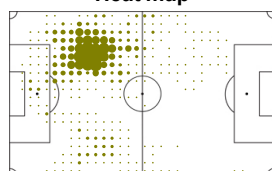


Direction of play →

Activities

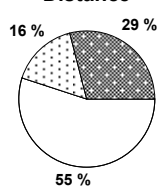
	1st half	2nd half	Total	Team total	Team avg
Total time played (mins)	46'04"	48'02"	94'06"		
Low activity time spent (%)	84%	78%	81%	82%	
Medium activity time spent (%)	8%	10%	9%	8%	
High activity time spent (%)	8%	12%	10%	10%	
Distance covered (metres)	4,972	5,785	10,757	108,606	9,868
Low activity distance covered (metres)	2,998	2,965	5,963	61,535	5,591
Medium activity distance covered (metres)	716	980	1,696	16,576	1,506
High activity distance covered (metres)	1,259	1,841	3,100	30,495	2,771
Top speed (km/h)	21.11	26.70	26.70	26.70	21.38
Sprints	44	76	120	1206	138

Heat map



Direction of play →

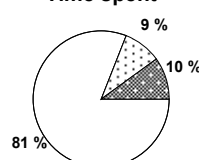
Distance



Activity



Time spent



FIFA does not vouch for the accuracy of technical statistics compiled in association with its competition results system partner.

SAT 19 JUN 2010; 15:30 CET / 15:30 local time - Version 1

Page1/0

2010 FIFA World Cup South Africa™

FIFA Partners



FIFA World Cup Sponsors



National Supporters



Player Statistics



Group E

Netherlands - Japan 1:0 (0:0)

Durban / Durban Stadium / RSA



Japan
7 Yasuhito ENDO
Midfield

	1st half	2nd half	Total	Team total	Team avg
Goal(s) scored	0	0	0	0	
Attempts on/off target	0	0	0	10	
Assist(s)	0	0	0	0	
Offside(s)	0	0	0	1	
Save(s)	0	0	0	0	
Yellow card(s)	0	0	0	0	
Red card	0	0	0	0	
Foul(s) committed	0	0	0	11	
Delivery/solo runs into the attacking third	1	2	3	18	1.7
Delivery/solo runs into the penalty area	1	2	3	4	0.4
Tackles gaining the ball	0	0	0	0	0.0
Tackles not gaining the ball	0	0	0	2	0.2
Tackles suffered losing the ball	0	0	0	3	0.3
Tackles suffered not losing the ball	0	0	0	4	0.4
Clearances Completed	0	0	0	1	0.1
Clearances Attempted	0	1	1	10	1.0

Passing distribution



Direction of play →

Received passing distribution

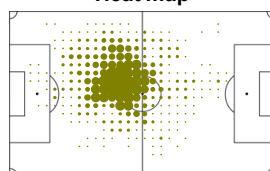


Direction of play →

Activities

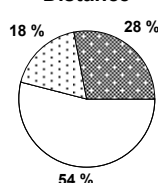
	1st half	2nd half	Total	Team total	Team avg
Total time played (mins)	46'04"	48'02"	94'06"		
Low activity time spent (%)	80%	77%	78%	82%	
Medium activity time spent (%)	10%	11%	10%	8%	
High activity time spent (%)	10%	12%	12%	10%	
Distance covered (metres)	5,239	5,766	11,005	108,606	9,868
Low activity distance covered (metres)	2,918	2,997	5,915	61,535	5,591
Medium activity distance covered (metres)	947	1,052	1,999	16,576	1,506
High activity distance covered (metres)	1,375	1,716	3,091	30,495	2,771
Top speed (km/h)	20.15	25.94	25.94	26.70	21.38
Sprints	51	54	105	1206	138

Heat map



Direction of play →

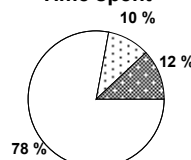
Distance



Activity



Time spent



FIFA does not vouch for the accuracy of technical statistics compiled in association with its competition results system partner.

SAT 19 JUN 2010; 15:30 CET / 15:30 local time - Version 1

Page1/0

2010 FIFA World Cup South Africa™

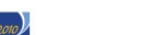
FIFA Partners



FIFA World Cup Sponsors



National Supporters



Player Statistics



Group E

Netherlands - Japan 1:0 (0:0)

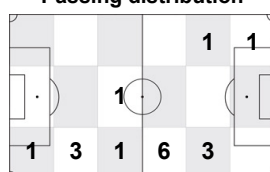
Durban / Durban Stadium / RSA



Japan
8 Daisuke MATSUI
 Midfield

	1st half	2nd half	Total	Team total	Team avg
Goal(s) scored	0	0	0	0	
Attempts on/off target	1	0	1	10	
Assist(s)	0	0	0	0	
Offside(s)	0	0	0	1	
Save(s)	0	0	0	0	
Yellow card(s)	0	0	0	0	
Red card	0	0	0	0	
Foul(s) committed	0	0	0	11	
Delivery/solo runs into the attacking third	2	0	2	18	1.7
Delivery/solo runs into the penalty area	0	0	0	4	0.4
Tackles gaining the ball	0	0	0	0	0.0
Tackles not gaining the ball	0	0	0	2	0.2
Tackles suffered losing the ball	0	0	0	3	0.3
Tackles suffered not losing the ball	0	0	0	4	0.4
Clearances Completed	0	0	0	1	0.1
Clearances Attempted	0	0	0	10	1.0

Passing distribution



Direction of play →

Received passing distribution

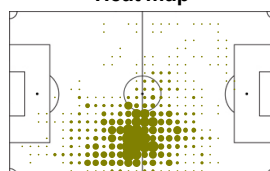


Direction of play →

Activities

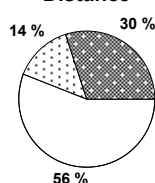
	1st half	2nd half	Total	Team total	Team avg
Total time played (mins)	46'04"	18'39"	64'43"		
Low activity time spent (%)	80%	79%	80%	82%	
Medium activity time spent (%)	9%	9%	9%	8%	
High activity time spent (%)	11%	12%	11%	10%	
Distance covered (metres)	5,280	2,194	7,474	108,606	9,868
Low activity distance covered (metres)	3,079	1,120	4,199	61,535	5,591
Medium activity distance covered (metres)	741	334	1,075	16,576	1,506
High activity distance covered (metres)	1,460	741	2,201	30,495	2,771
Top speed (km/h)	21.36	19.61	21.36	26.70	21.38
Sprints	66	29	95	1206	138

Heat map



Direction of play →

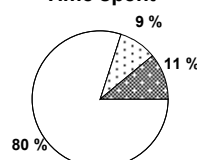
Distance



Activity



Time spent



FIFA does not vouch for the accuracy of technical statistics compiled in association with its competition results system partner.

SAT 19 JUN 2010; 15:30 CET / 15:30 local time - Version 1

Page1/0

2010 FIFA World Cup South Africa™

FIFA Partners



FIFA World Cup Sponsors



National Supporters



Player Statistics



Group E

Netherlands - Japan 1:0 (0:0)

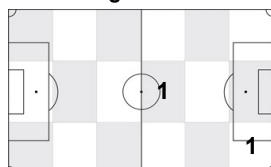
Durban / Durban Stadium / RSA



Japan
9 Shinji OKAZAKI
Forward

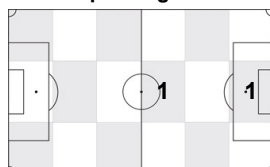
	1st half	2nd half	Total	Team total	Team avg
Goal(s) scored	0	0	0	0	
Attempts on/off target	0	1	1	10	
Assist(s)	0	0	0	0	
Offside(s)	0	0	0	1	
Save(s)	0	0	0	0	
Yellow card(s)	0	0	0	0	
Red card	0	0	0	0	
Foul(s) committed	0	0	0	11	
Delivery/solo runs into the attacking third	-	0	0	18	1.7
Delivery/solo runs into the penalty area	-	0	0	4	0.4
Tackles gaining the ball	-	0	0	0	0.0
Tackles not gaining the ball	-	0	0	2	0.2
Tackles suffered losing the ball	-	0	0	3	0.3
Tackles suffered not losing the ball	-	0	0	4	0.4
Clearances Completed	-	0	0	1	0.1
Clearances Attempted	-	0	0	10	1.0

Passing distribution



Direction of play →

Received passing distribution

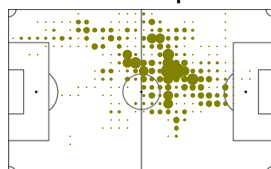


Direction of play →

Activities

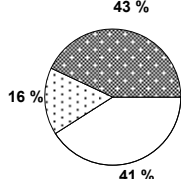
	1st half	2nd half	Total	Team total	Team avg
Total time played (mins)	0'00"	16'45"	16'45"		
Low activity time spent (%)	0%	66%	66%	82%	
Medium activity time spent (%)	0%	12%	12%	8%	
High activity time spent (%)	0%	22%	22%	10%	
Distance covered (metres)	-	2,423	2,423	108,606	9,868
Low activity distance covered (metres)	-	984	984	61,535	5,591
Medium activity distance covered (metres)	-	392	392	16,576	1,506
High activity distance covered (metres)	-	1,046	1,046	30,495	2,771
Top speed (km/h)	-	23.82	23.82	26.70	21.38
Sprints	-	57	57	1206	138

Heat map



Direction of play →

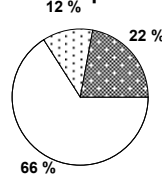
Distance



Activity



Time spent



FIFA does not vouch for the accuracy of technical statistics compiled in association with its competition results system partner.

SAT 19 JUN 2010; 15:30 CET / 15:30 local time - Version 1

Page1/0

2010 FIFA World Cup South Africa™

FIFA Partners



FIFA World Cup Sponsors



National Supporters



Player Statistics



Group E

Netherlands - Japan 1:0 (0:0)

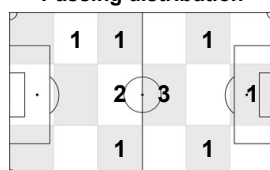
Durban / Durban Stadium / RSA



Japan
10 Shunsuke NAKAMURA
Midfield

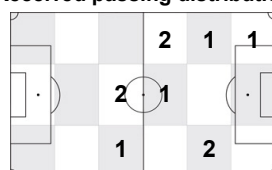
	1st half	2nd half	Total	Team total	Team avg
Goal(s) scored	0	0	0	0	
Attempts on/off target	0	0	0	10	
Assist(s)	0	0	0	0	
Offside(s)	0	0	0	1	
Save(s)	0	0	0	0	
Yellow card(s)	0	0	0	0	
Red card	0	0	0	0	
Foul(s) committed	0	0	0	11	
Delivery/solo runs into the attacking third	-	0	0	18	1.7
Delivery/solo runs into the penalty area	-	0	0	4	0.4
Tackles gaining the ball	-	0	0	0	0.0
Tackles not gaining the ball	-	0	0	2	0.2
Tackles suffered losing the ball	-	1	1	3	0.3
Tackles suffered not losing the ball	-	0	0	4	0.4
Clearances Completed	-	1	1	1	0.1
Clearances Attempted	-	1	1	10	1.0

Passing distribution



Direction of play →

Received passing distribution

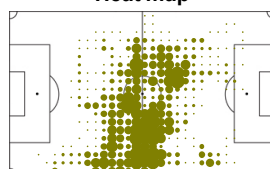


Direction of play →

Activities

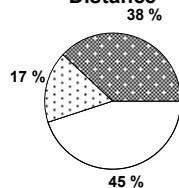
	1st half	2nd half	Total	Team total	Team avg
Total time played (mins)	0'00"	29'23"	29'23"		
Low activity time spent (%)	0%	70%	70%	82%	
Medium activity time spent (%)	0%	12%	12%	8%	
High activity time spent (%)	0%	18%	18%	10%	
Distance covered (metres)	-	4,163	4,163	108,606	9,868
Low activity distance covered (metres)	-	1,877	1,877	61,535	5,591
Medium activity distance covered (metres)	-	724	724	16,576	1,506
High activity distance covered (metres)	-	1,563	1,563	30,495	2,771
Top speed (km/h)	-	21.11	21.11	26.70	21.38
Sprints	-	61	61	1206	138

Heat map



Direction of play →

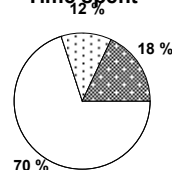
Distance



Activity



Time spent



FIFA does not vouch for the accuracy of technical statistics compiled in association with its competition results system partner.

SAT 19 JUN 2010; 15:30 CET / 15:30 local time - Version 1

Page1/0

2010 FIFA World Cup South Africa™

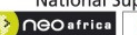
FIFA Partners



FIFA World Cup Sponsors



National Supporters



Player Statistics



Group E

Netherlands - Japan 1:0 (0:0)

Durban / Durban Stadium / RSA



Japan
11 Keiji TAMADA
 Forward

	1st half	2nd half	Total	Team total	Team avg
Goal(s) scored	0	0	0	0	
Attempts on/off target	0	0	0	10	
Assist(s)	0	0	0	0	
Offside(s)	0	0	0	1	
Save(s)	0	0	0	0	
Yellow card(s)	0	0	0	0	
Red card	0	0	0	0	
Foul(s) committed	0	0	0	11	
Delivery/solo runs into the attacking third	-	0	0	18	1.7
Delivery/solo runs into the penalty area	-	0	0	4	0.4
Tackles gaining the ball	-	0	0	0	0.0
Tackles not gaining the ball	-	0	0	2	0.2
Tackles suffered losing the ball	-	0	0	3	0.3
Tackles suffered not losing the ball	-	0	0	4	0.4
Clearances Completed	-	0	0	1	0.1
Clearances Attempted	-	0	0	10	1.0

Passing distribution



Direction of play →

Received passing distribution

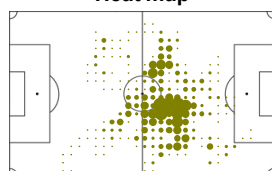


Direction of play →

Activities

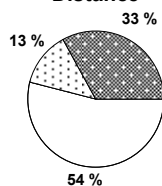
	1st half	2nd half	Total	Team total	Team avg
Total time played (mins)	0'00"	16'42"	16'42"		
Low activity time spent (%)	0%	80%	80%	82%	
Medium activity time spent (%)	0%	8%	8%	8%	
High activity time spent (%)	0%	12%	12%	10%	
Distance covered (metres)	-	2,064	2,064	108,606	9,868
Low activity distance covered (metres)	-	1,120	1,120	61,535	5,591
Medium activity distance covered (metres)	-	264	264	16,576	1,506
High activity distance covered (metres)	-	680	680	30,495	2,771
Top speed (km/h)	-	19.63	19.63	26.70	21.38
Sprints	-	41	41	1206	138

Heat map



Direction of play →

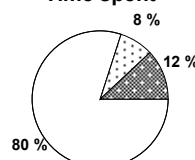
Distance



Activity



Time spent



FIFA does not vouch for the accuracy of technical statistics compiled in association with its competition results system partner.

SAT 19 JUN 2010; 15:30 CET / 15:30 local time - Version 1

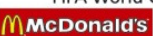
Page1/0

2010 FIFA World Cup South Africa™

FIFA Partners



FIFA World Cup Sponsors



National Supporters



Player Statistics



Group E

Netherlands - Japan 1:0 (0:0)

Durban / Durban Stadium / RSA



Japan
16 Yoshito OKUBO
 Forward

	1st half	2nd half	Total	Team total	Team avg
Goal(s) scored	0	0	0	0	
Attempts on/off target	0	3	3	10	
Assist(s)	0	0	0	0	
Offside(s)	1	0	1	1	
Save(s)	0	0	0	0	
Yellow card(s)	0	0	0	0	
Red card	0	0	0	0	
Foul(s) committed	1	1	2	11	
Delivery/solo runs into the attacking third	1	0	1	18	1.7
Delivery/solo runs into the penalty area	0	0	0	4	0.4
Tackles gaining the ball	0	0	0	0	0.0
Tackles not gaining the ball	0	0	0	2	0.2
Tackles suffered losing the ball	0	0	0	3	0.3
Tackles suffered not losing the ball	0	2	2	4	0.4
Clearances Completed	0	0	0	1	0.1
Clearances Attempted	2	0	2	10	1.0

Passing distribution



Direction of play →

Received passing distribution

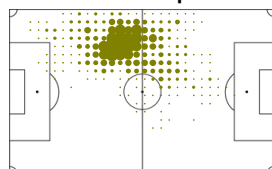


Direction of play →

Activities

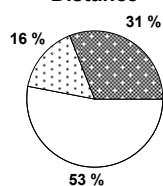
	1st half	2nd half	Total	Team total	Team avg
Total time played (mins)	46'04"	31'20"	77'24"		
Low activity time spent (%)	81%	80%	80%	82%	
Medium activity time spent (%)	8%	9%	8%	8%	
High activity time spent (%)	11%	11%	12%	10%	
Distance covered (metres)	5,206	3,475	8,681	108,606	9,868
Low activity distance covered (metres)	2,697	1,889	4,586	61,535	5,591
Medium activity distance covered (metres)	797	555	1,352	16,576	1,506
High activity distance covered (metres)	1,711	1,031	2,742	30,495	2,771
Top speed (km/h)	19.52	19.61	19.61	26.70	21.38
Sprints	76	40	116	1206	138

Heat map



Direction of play →

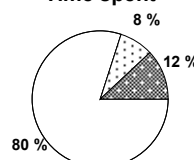
Distance



Activity



Time spent



FIFA does not vouch for the accuracy of technical statistics compiled in association with its competition results system partner.

SAT 19 JUN 2010; 15:30 CET / 15:30 local time - Version 1

Page1/0

2010 FIFA World Cup South Africa™

FIFA Partners



FIFA World Cup Sponsors



National Supporters



Player Statistics



Group E

Netherlands - Japan 1:0 (0:0)

Durban / Durban Stadium / RSA



Japan
17 Makoto HASEBE
 Midfield

	1st half	2nd half	Total	Team total	Team avg
Goal(s) scored	0	0	0	0	
Attempts on/off target	0	0	0	10	
Assist(s)	0	0	0	0	
Offside(s)	0	0	0	1	
Save(s)	0	0	0	0	
Yellow card(s)	0	0	0	0	
Red card	0	0	0	0	
Foul(s) committed	0	0	0	11	
Delivery/solo runs into the attacking third	1	2	3	18	1.7
Delivery/solo runs into the penalty area	0	0	0	4	0.4
Tackles gaining the ball	0	0	0	0	0.0
Tackles not gaining the ball	0	0	0	2	0.2
Tackles suffered losing the ball	0	1	1	3	0.3
Tackles suffered not losing the ball	0	0	0	4	0.4
Clearances Completed	0	0	0	1	0.1
Clearances Attempted	0	0	0	10	1.0

Passing distribution



Direction of play →

Received passing distribution

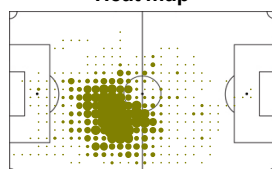


Direction of play →

Activities

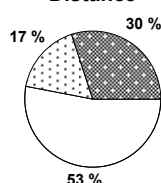
	1st half	2nd half	Total	Team total	Team avg
Total time played (mins)	46'04"	31'17"	77'21"		
Low activity time spent (%)	79%	77%	78%	82%	
Medium activity time spent (%)	10%	10%	10%	8%	
High activity time spent (%)	11%	13%	12%	10%	
Distance covered (metres)	5,234	3,894	9,128	108,606	9,868
Low activity distance covered (metres)	2,930	1,952	4,882	61,535	5,591
Medium activity distance covered (metres)	944	653	1,597	16,576	1,506
High activity distance covered (metres)	1,359	1,289	2,648	30,495	2,771
Top speed (km/h)	18.90	20.79	20.79	26.70	21.38
Sprints	47	41	88	1206	138

Heat map



Direction of play →

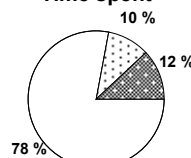
Distance



Activity



Time spent



FIFA does not vouch for the accuracy of technical statistics compiled in association with its competition results system partner.

SAT 19 JUN 2010; 15:30 CET / 15:30 local time - Version 1

Page1/0

2010 FIFA World Cup South Africa™

FIFA Partners



FIFA World Cup Sponsors



National Supporters



Player Statistics



Group E

Netherlands - Japan 1:0 (0:0)

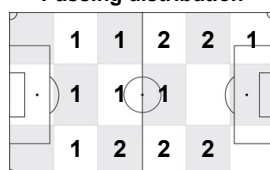
Durban / Durban Stadium / RSA



Japan
18 Keisuke HONDA
 Midfield

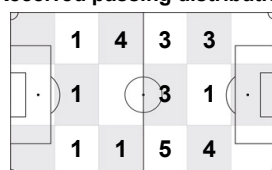
	1st half	2nd half	Total	Team total	Team avg
Goal(s) scored	0	0	0	0	
Attempts on/off target	2	0	2	10	
Assist(s)	0	0	0	0	
Offside(s)	0	0	0	1	
Save(s)	0	0	0	0	
Yellow card(s)	0	0	0	0	
Red card	0	0	0	0	
Foul(s) committed	4	1	5	11	
Delivery/solo runs into the attacking third	0	1	1	18	1.7
Delivery/solo runs into the penalty area	0	0	0	4	0.4
Tackles gaining the ball	0	0	0	0	0.0
Tackles not gaining the ball	0	1	1	2	0.2
Tackles suffered losing the ball	1	0	1	3	0.3
Tackles suffered not losing the ball	1	0	1	4	0.4
Clearances Completed	0	0	0	1	0.1
Clearances Attempted	0	0	0	10	1.0

Passing distribution



Direction of play →

Received passing distribution

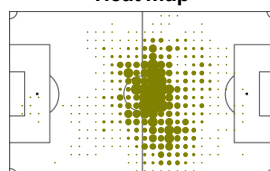


Direction of play →

Activities

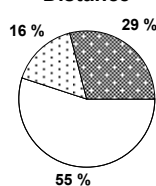
	1st half	2nd half	Total	Team total	Team avg
Total time played (mins)	46'04"	48'02"	94'06"		
Low activity time spent (%)	79%	80%	80%	82%	
Medium activity time spent (%)	10%	9%	9%	8%	
High activity time spent (%)	11%	11%	11%	10%	
Distance covered (metres)	5,150	5,193	10,343	108,606	9,868
Low activity distance covered (metres)	2,821	2,849	5,670	61,535	5,591
Medium activity distance covered (metres)	895	757	1,652	16,576	1,506
High activity distance covered (metres)	1,434	1,586	3,020	30,495	2,771
Top speed (km/h)	20.94	21.36	21.36	26.70	21.38
Sprints	56	61	117	1206	138

Heat map



Direction of play →

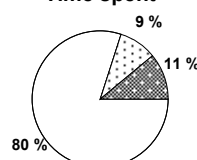
Distance



Activity



Time spent



FIFA does not vouch for the accuracy of technical statistics compiled in association with its competition results system partner.

SAT 19 JUN 2010; 15:30 CET / 15:30 local time - Version 1

Page1/0

2010 FIFA World Cup South Africa™

FIFA Partners



FIFA World Cup Sponsors



National Supporters



Player Statistics



Group E

Netherlands - Japan 1:0 (0:0)

Durban / Durban Stadium / RSA



Japan
21 Eiji KAWASHIMA
 Goalkeeper

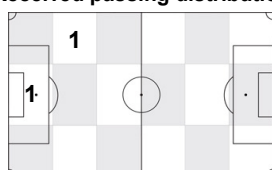
	1st half	2nd half	Total	Team total	Team avg
Goal(s) scored	0	0	0	0	
Attempts on/off target	0	0	0	10	
Assist(s)	0	0	0	0	
Offside(s)	0	0	0	1	
Save(s)	0	0	0	0	
Yellow card(s)	0	0	0	0	
Red card	0	0	0	0	
Foul(s) committed	0	0	0	11	
Delivery/solo runs into the attacking third	1	0	1	18	1.7
Delivery/solo runs into the penalty area	0	0	0	4	0.4
Tackles gaining the ball	0	0	0	0	0.0
Tackles not gaining the ball	0	0	0	2	0.2
Tackles suffered losing the ball	0	0	0	3	0.3
Tackles suffered not losing the ball	0	0	0	4	0.4
Clearances Completed	0	0	0	1	0.1
Clearances Attempted	1	0	1	10	1.0

Passing distribution



Direction of play →

Received passing distribution

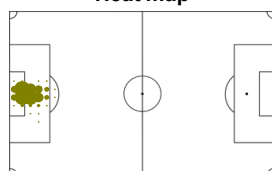


Direction of play →

Activities

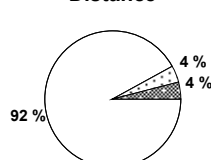
	1st half	2nd half	Total	Team total	Team avg
Total time played (mins)	46'04"	48'02"	94'06"		
Low activity time spent (%)	100%	99%	99%	82%	
Medium activity time spent (%)	0%	1%	1%	8%	
High activity time spent (%)	0%	0%	0%	10%	
Distance covered (metres)	1,543	1,877	3,420	108,606	9,868
Low activity distance covered (metres)	1,496	1,661	3,157	61,535	5,591
Medium activity distance covered (metres)	31	97	128	16,576	1,506
High activity distance covered (metres)	16	119	135	30,495	2,771
Top speed (km/h)	8.06	10.24	10.24	26.70	21.38
Sprints	0	6	6	1206	138

Heat map



Direction of play →

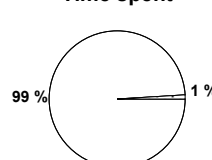
Distance



Activity



Time spent



FIFA does not vouch for the accuracy of technical statistics compiled in association with its competition results system partner.

SAT 19 JUN 2010; 15:30 CET / 15:30 local time - Version 1

Page1/0

2010 FIFA World Cup South Africa™

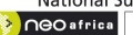
FIFA Partners



FIFA World Cup Sponsors



National Supporters



Player Statistics



Group E

Netherlands - Japan 1:0 (0:0)

Durban / Durban Stadium / RSA



Japan
22 Yuji NAKAZAWA
Defender

	1st half	2nd half	Total	Team total	Team avg
Goal(s) scored	0	0	0	0	
Attempts on/off target	0	0	0	10	
Assist(s)	0	0	0	0	
Offside(s)	0	0	0	1	
Save(s)	0	0	0	0	
Yellow card(s)	0	0	0	0	
Red card	0	0	0	0	
Foul(s) committed	1	0	1	11	
Delivery/solo runs into the attacking third	1	1	2	18	1.7
Delivery/solo runs into the penalty area	0	0	0	4	0.4
Tackles gaining the ball	0	0	0	0	0.0
Tackles not gaining the ball	0	0	0	2	0.2
Tackles suffered losing the ball	0	0	0	3	0.3
Tackles suffered not losing the ball	0	0	0	4	0.4
Clearances Completed	0	0	0	1	0.1
Clearances Attempted	0	0	0	10	1.0

Passing distribution



Direction of play →

Received passing distribution

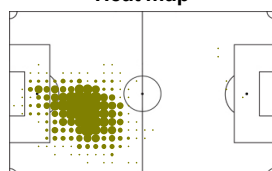


Direction of play →

Activities

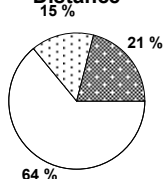
	1st half	2nd half	Total	Team total	Team avg
Total time played (mins)	46'04"	48'02"	94'06"		
Low activity time spent (%)	87%	86%	86%	82%	
Medium activity time spent (%)	7%	6%	7%	8%	
High activity time spent (%)	6%	8%	7%	10%	
Distance covered (metres)	4,323	4,785	9,108	108,606	9,868
Low activity distance covered (metres)	2,845	2,971	5,816	61,535	5,591
Medium activity distance covered (metres)	669	657	1,326	16,576	1,506
High activity distance covered (metres)	809	1,157	1,966	30,495	2,771
Top speed (km/h)	19.06	18.37	19.06	26.70	21.38
Sprints	25	45	70	1206	138

Heat map



Direction of play →

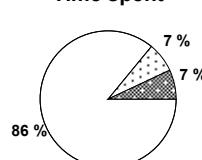
Distance



Activity



Time spent



FIFA does not vouch for the accuracy of technical statistics compiled in association with its competition results system partner.

SAT 19 JUN 2010; 15:30 CET / 15:30 local time - Version 1

Page1/0

2010 FIFA World Cup South Africa™

FIFA Partners



FIFA World Cup Sponsors



National Supporters



